



## **NICE Driver Manual**

All rights reserved.

No part of this publication may be reproduced, stored or transmitted in any form without the written permission of Lenbrook Industries Limited. While every effort has made to ensure the contents are accurate at the time of publication, features and specifications may be subject to change without prior notice.

Revision History			
Version	Date(mm/dd/yy)	Author	Description
1.0.0	04/02/2018	R. Pan	Initial release.
1.1.0	08/30/2018	R. Pan	Added installation note for CI580. Updated sect 3.4 to add "Save Queue". Updated known issues.
1.2.0	12/09/2019	R. Pan	Updated screenshots and added a note for direct input in sect 2.4
1.4.0	05/10/2021	R. Pan	Updated section 1.0 and added section 3.7-3.8 for media favorites.
1.6.1	12/23/2022	R. Pan	Updated section 2 for installation; added section 3.10 for grouping.
1.6.2	01/24/2023	R. Pan	Added driver description in section 1; Added known issue for v1.6.1 and v1.6.2
1.6.4	09/11/2023	R. Pan	Changed ELAN to Nice/ELAN; Added "Music Services" in root menu in Now Playing UI to disable/enable individual service (section 3.2)

# Table of Contents

<b>1.0 Introduction</b>	4
<b>2.0 Installation</b>	6
2.1 Copy Drivers to The Right Location	6
2.2 Install Media Comm Driver	6
2.3 Assign Source to Zone Controller Driver	7
2.4 Update Zone Name for Zone Controller Driver	7
2.5 Configure Zone Controller Driver Group Volume	8
2.6 Update Driver	9
<b>3.0 Using the Driver</b>	10
3.1 Launching BluOS Nice/ELAN Driver	10
3.2 Now Playing	10
3.3 Presets	11
3.4 Play Queue	12
3.5 Services	12
3.6 Search	13
3.7 Favorites	13
3.8 Media Favorites	15
3.9 Volume Control	17
3.10 Grouping	18
<b>4.0 Support</b>	20
<b>5.0 Known Issues</b>	21

# 1.0 Introduction

---

This document describes how to install, configure and use the BluOS Media Comm driver, Media Renderer driver, and BluOS Nice/ELAN Zone Controller drivers. The driver suite was created for the Nice/ELAN gSC2 and gSC10 controllers.

The driver suite supports all BluOS players. It provides functionality for now playing, transport control, volume control, presets, play queue, service browsing, service search, and media favorites. Media Comm driver does player discovery, automatic installation of Zone Controller drivers and Media Render driver. It also serves internal communication between players. Zone Controller drivers provides volume controls, source switch, and grouping. Media Renderer driver works as a source to the Zone Controller driver, providing metadata browsing, service browsing, service search, transport control, and media favorites.

This driver suite requires g!Tools version 7.3.77.0. It requires Nice/ELAN Controller firmware 8.7.514.0 or higher. The driver supports the latest BluOS firmware.

The driver suite includes the following drivers. It has one Media Comm driver and one Media Renderer driver for one project, and one Zone Controller for each type of player in a project.

BluOS\_MEDIA\_COMM.EDRVC  
Media Comm driver for player discovery and inter-communication among players

BluOS\_MEDIA\_RENDERER.EDRVC  
Media Renderer for service browsing, now playing metadata, queue handling

BluOS\_AlphaIQ\_ZONECTLR.EDRVC  
Zone Controller driver for PSB Alpha iQ

BluOS\_Attesa\_ZONECTLR.EDRVC  
Zone Controller driver for Roksan Attesa

BluOS\_B100S\_ZONECTLR.EDRVC  
Zone Controller driver for Bluesound Pro B100S

BluOS\_B160S\_ZONECTLR.EDRVC  
Zone Controller driver for Bluesound Pro B160S and B170S

BluOS\_B400S\_ZONECTLR.EDRVC  
Zone Controller driver for Bluesound Pro B400S

BluOS\_BSP125\_ZONECTLR.EDRVC  
Zone Controller driver for Bluesound Pro BSP125

BluOS\_BSP200\_ZONECTLR.EDRVC  
Zone Controller driver for Bluesound Pro BSP200, BSP500, and BSP1000

BluOS\_C389\_ZONECTLR.EDRVC  
Zone Controller driver for NAD C389 and C399

BluOS\_C700\_ZONECTLR.EDRVC  
Zone Controller driver for NAD C700

BluOS\_C3050\_ZONECTLR.EDRVC  
Zone Controller driver for NAD C3050

BluOS\_CI1580\_ZONECTLR.EDRVC  
Zone Controller driver for NAD CI580, CI580v2, and Monitor Audio IMS-4

BluOS\_M10\_ZONECTLR.EDRVC  
Zone Controller driver for NAD M10 and M10v2

BluOS\_NODE\_ZONECTLR.EDRVC  
Zone Controller driver for Bluesound NODE family and NAD CI720, CI720v2

BluOS\_POWERNODE\_ZONECTLR.EDRVC  
Zone Controller driver for Bluesound POWERNODE family

BluOS\_PULSE\_ZONECTLR.EDRVC  
Zone Controller driver for Bluesound PULSE family

BluOS\_VAULT\_ZONECTLR.EDRVC  
Zone Controller driver for Bluesound VAULT family

## 2.0 Installation

---

Ensure that your players are running the latest version of BluOS firmware and all players to be configured are on the same network. Install Media Comm driver manually, which will then install one set of Media Renderer driver and Zone Controller driver automatically for each player discovered.

### 2.1 Copy Drivers to The Right Location

---

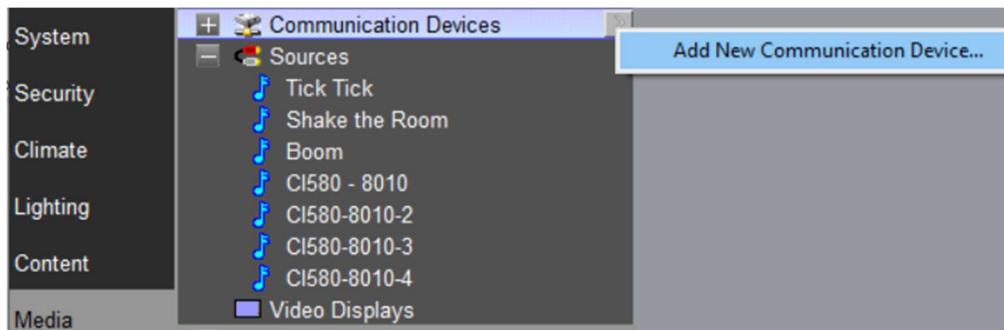
The default folder that the Configurator looks for drivers is set up at the very first time of your using Configurator. Usually you need a customized folder to keep all Nice/Elan drivers in. The first time you add a driver, click “Search Folder...” and navigate to the customized folder. After that, every Controller you log into from the same PC will look to that folder for drivers. But you can always navigate to other customized folder that the drivers are in by clicking “Search Folder...” and navigate to it when adding a driver from other customized folders.

Copy the drivers to your PC either to the first-time setup folder or a new customized folder.

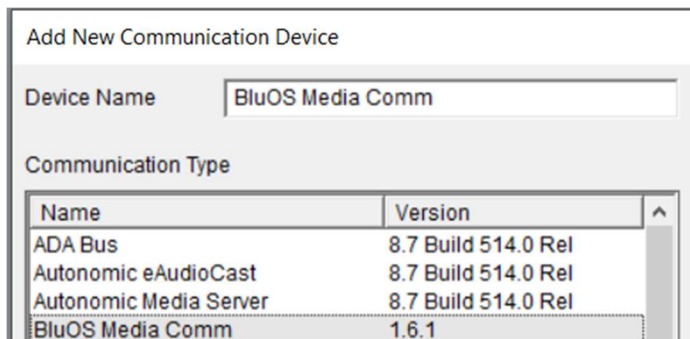
### 2.2 Install Media Comm Driver

---

In g!Configurator “Media”, right click on “Communication Devices” and click “Add New Communication Device...”.

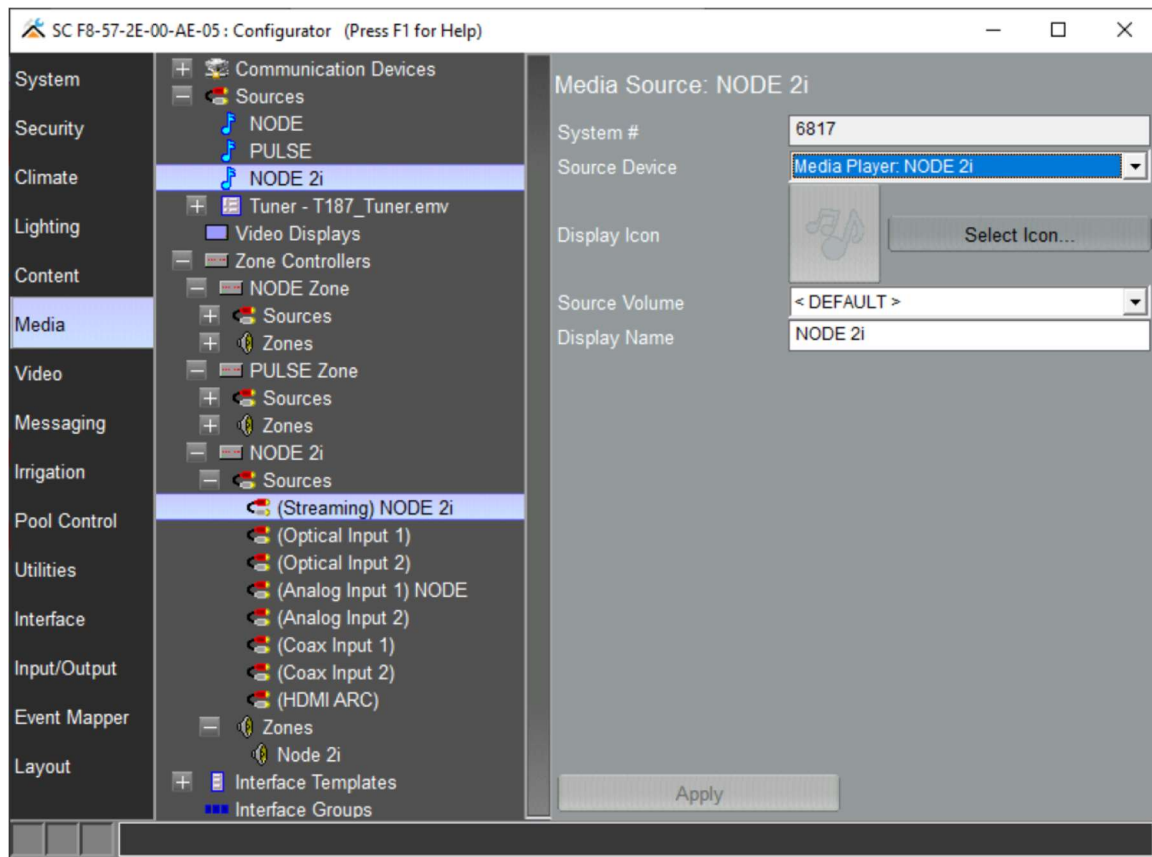


Select “BluOS Media Comm” driver to install. Once it’s installed, it’ll automatically install a set of Media Renderer driver and Zone Controller driver for each player discovered on network.



## 2.3 Assign Source to Zone Controller Driver

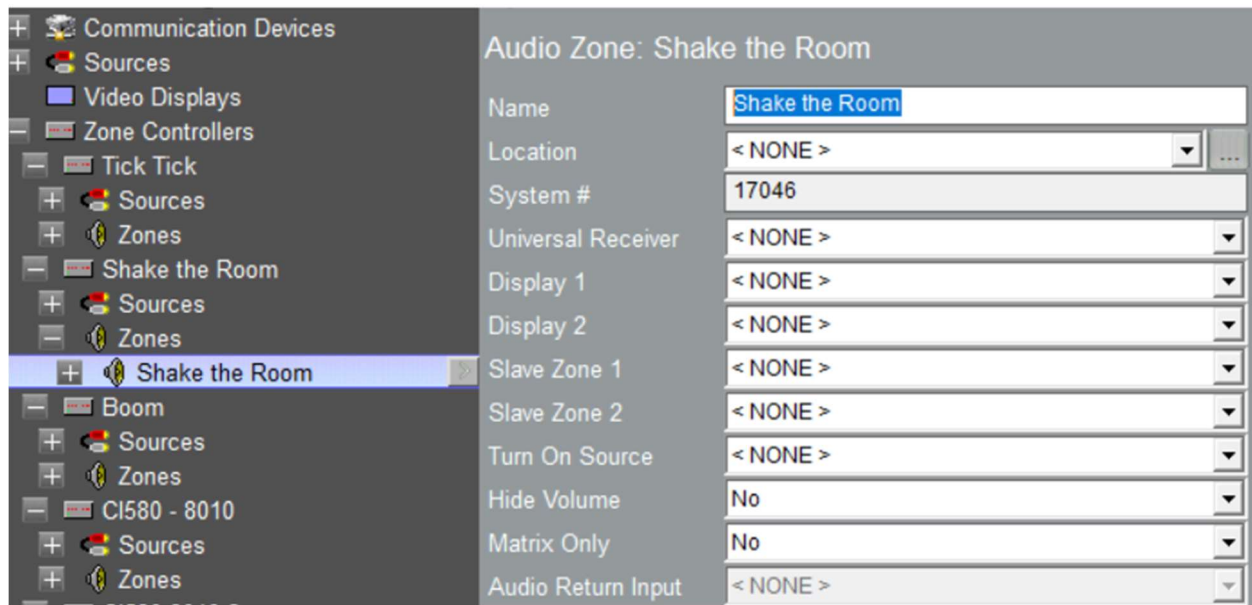
One Zone Controller driver needs one Media Renderer source. When Media Comm driver installs Media Renderer and Zone Controller driver, it will automatically assign Media Renderer source to its corresponding Zone Controller driver source “Streaming”.



**NOTE:** Due to driver limitation, please do not change the names of the direct inputs. For example, Optical Input 1 has to stay as Optical Input 1.

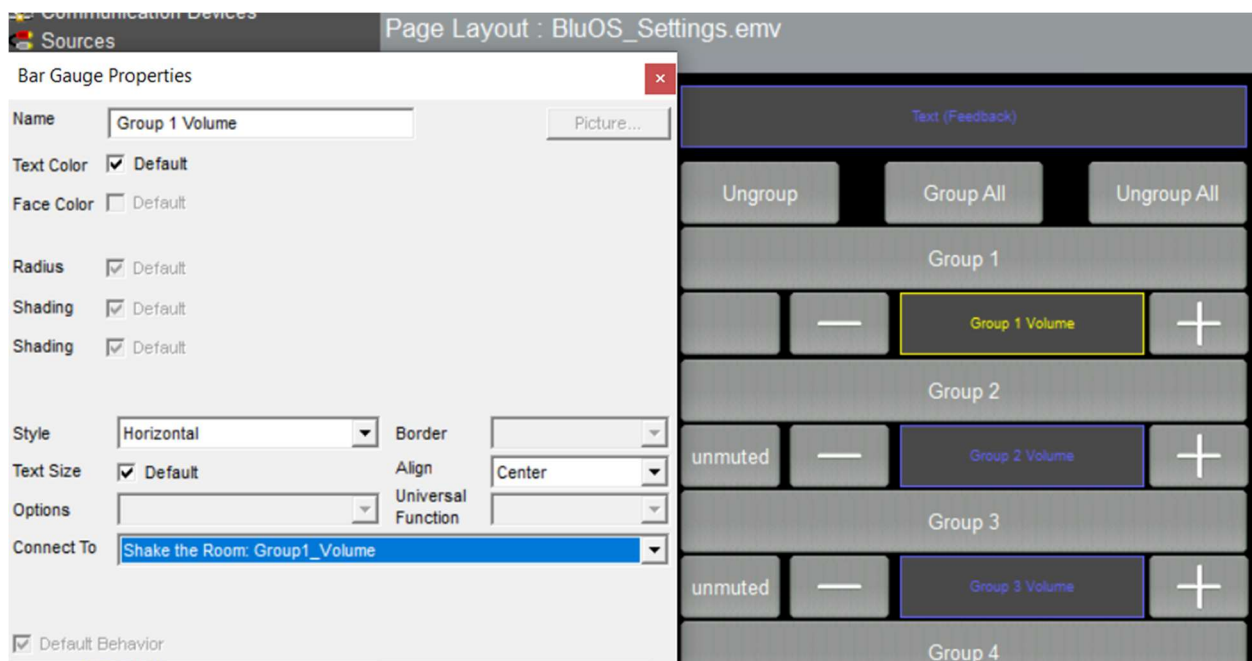
## 2.4 Update Zone Name for Zone Controller Driver

Theoretically, when Media Render driver and Zone Controller driver are installed, Media Comm driver will automatically name the zone of Zone Controller driver. However, it is not always the case. Make sure to name the zone if it is not named automatically.



## 2.5 Configure Zone Controller Driver Group Volume

Group volume bar gauge of a Zone Controller driver needs to be manually assigned in g!Configurator as shown below. Nice/Elan will fix it in future.





## 2.6 Update Driver

Each driver has a “Update Driver” button. Click on it to update its driver as necessary. Only one update for one “type” of driver is required. Each Zone Controller driver also has a “Discover Player” button. It can be used to discover the player in case it drops out of network.

System

Security

Climate

Lighting

Content

Media

Video

Messaging

Irrigation

Pool Control

Utilities

Interface

Input/Output

Event Mapper

Layout

Communication Devices

Sources

Video Displays

Zone Controllers

Tick Tick

Sources

Zones

Shake the Room

Sources

Zones

Boom

Sources

Zones

CI580 - 8010

Sources

Zones

CI580-8010-2

Sources

Zones

CI580-8010-3

Sources

Zones

CI580-8010-4

Sources

Zones

Interface Templates

Interface Groups

Zone Controller : Shake the Room

Name: Shake the Room

System #: 17041

Status Color Coding: Enabled

Status: ☒ Ok

Driver Version: 1.6.1

Driver Vendor: The Lenbrook Group

Installed: 11/20/2022 21:44

Device Type: BluOS PULSE Zone Controller

Power Link: < NONE >

IP Address: 192 . 168 . 1 . 125

Port: 11000

Apply Discover Player Update Driver

Media Comm driver has two buttons “Enable Discovery” and “Disable Discovery” to enable/disable player discovery.

Communication Device: BluOS Media Comm

Name: BluOS Media Comm

System #: 2978

Device Type: Ethernet

Driver Name: BluOS Media Comm

Driver Version: 1.6.1

Driver Vendor: The Lenbrook Group

Installed: 10/6/2022 18:24

IP Address: 192 . 168 . 1 . 0

Port: 11000

Apply Enable Discovery Disable Discovery Update Driver

## 3.0 Using the Driver

---

The current driver version 1.0.0 provides now playing, presets, play queue, service browsing and searching.

### 3.1 Launching BluOS Nice/ELAN Driver

---

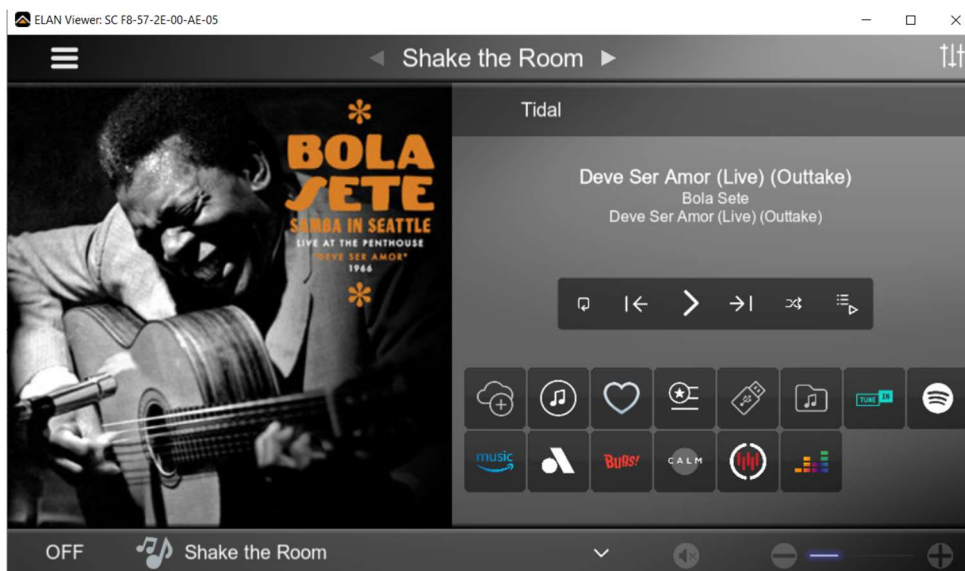
Launch g!Viewer or Nice/ELAN mobile app. Click “Media” to see all the players installed.



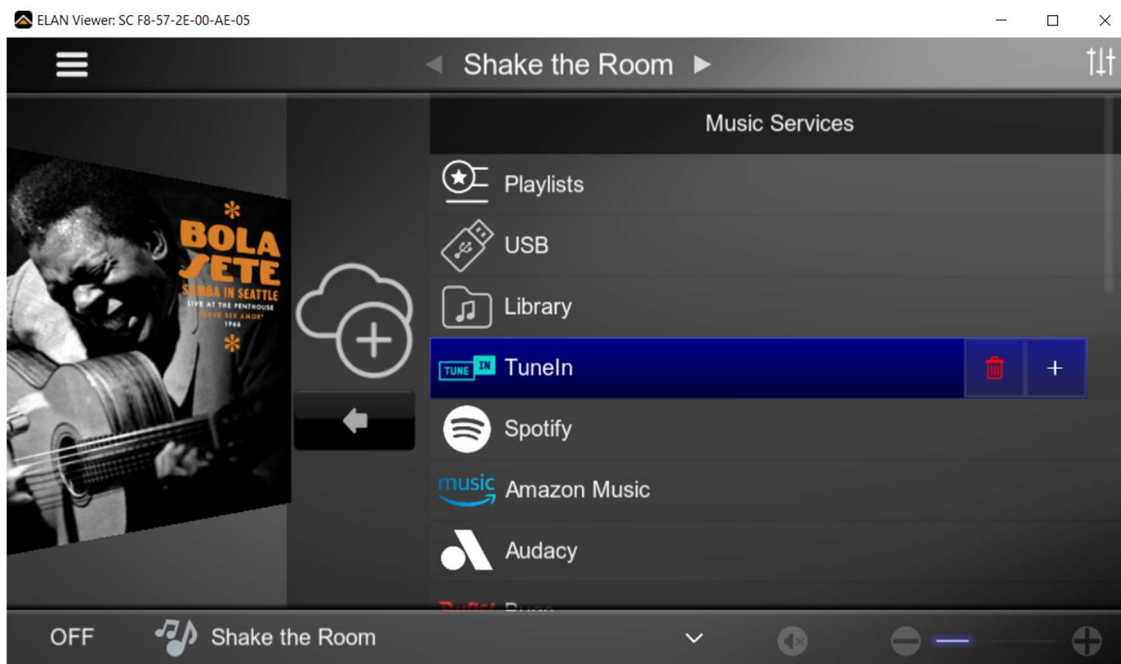
### 3.2 Now Playing

---

Click on any of the BluOS players to enter Now Playing page. It has fully supported transport control. Due to Nice/ELAN system limit, up to 14 services are supported (including Music Services, Presets, Favourites, Playlists, Library, USB, etc.)

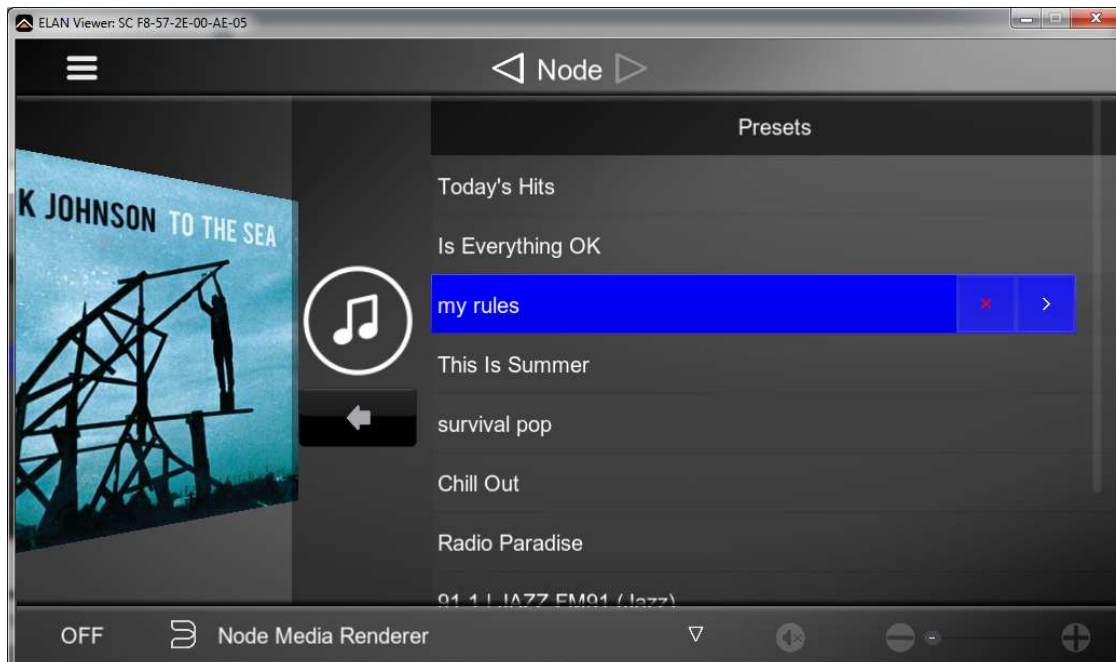


Click on “Music Services” icon will show up all available services, with each having “Add” and “Remove” options. Click “Remove” of the service will remove it from Now Playing root menu. This gives flexibility of listing only the desired services in root menu because Elan has a limit of 14 to be displayed on UI.



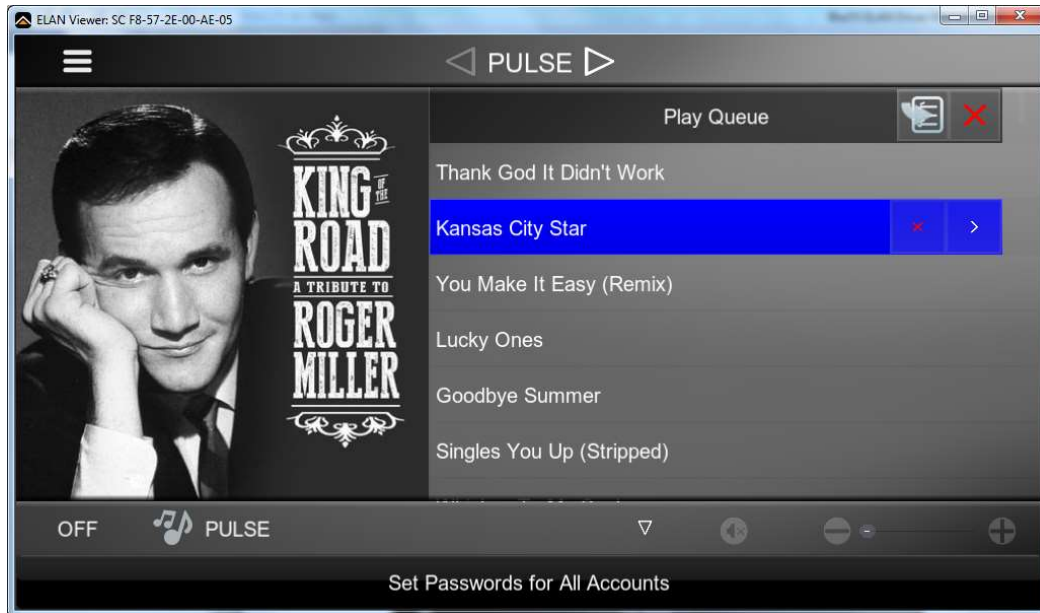
### 3.3 Presets

Click on “Presets” icon (the first one) will bring up presets list. Each preset has “load” and “delete” actions.



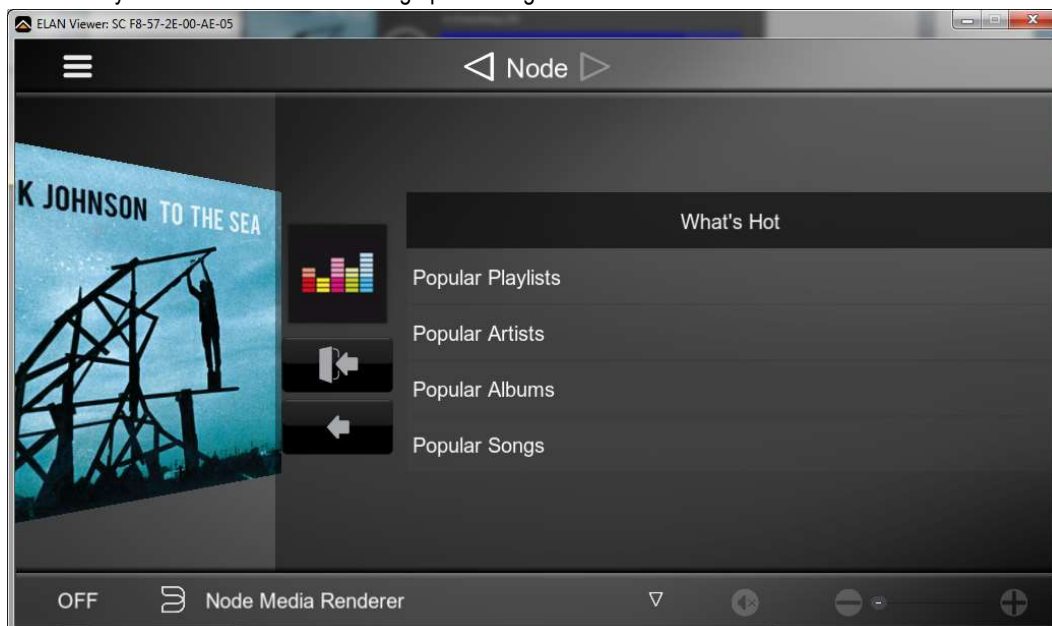
## 3.4 Play Queue

Click on the right most icon next to transport control keys will bring up play queue. Each track has “Play” and “Delete” actions. And queue has “Save Queue” icon on top right to save the queue.



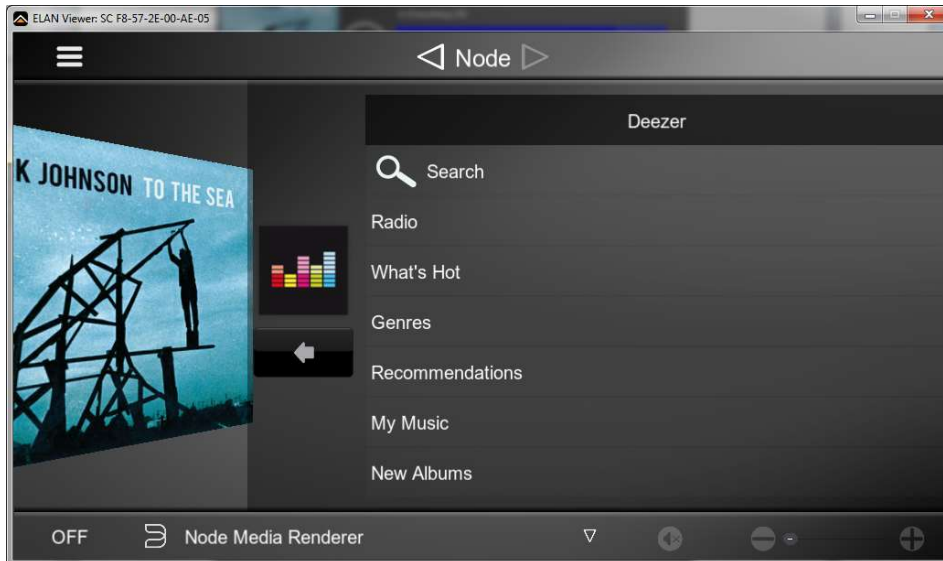
## 3.5 Services

Click on any music service icons will bring up browsing screen.



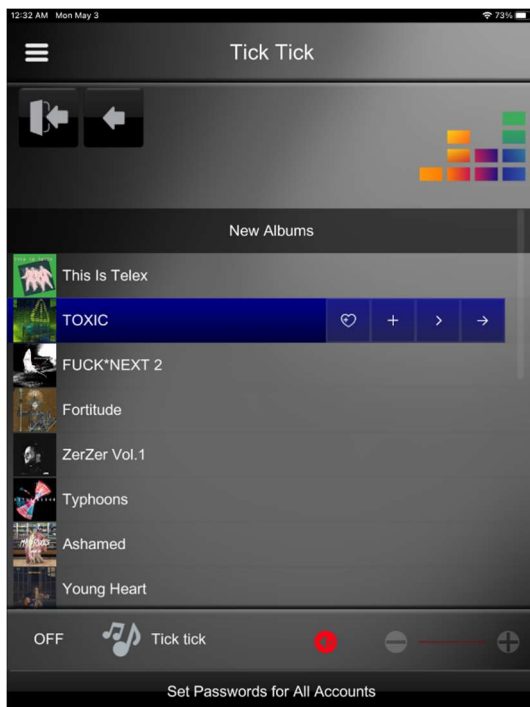
## 3.6 Search

If a music service has search functionality available, you can click on “Search” on the first page of the music service to do the search.

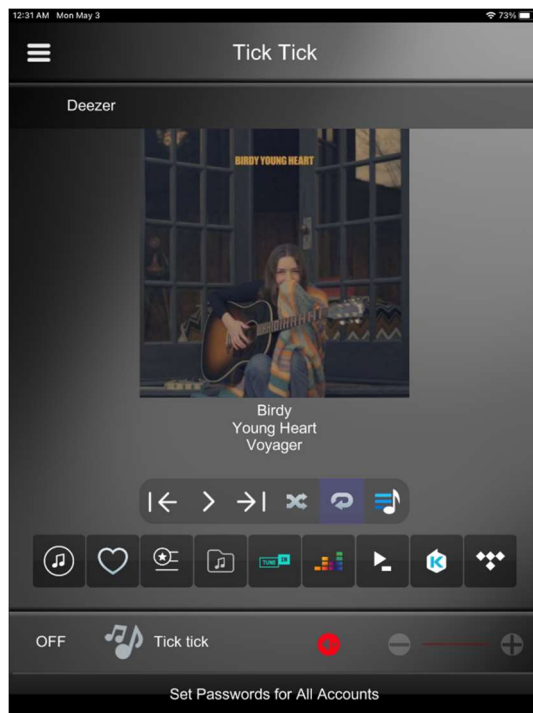


## 3.7 Favorites

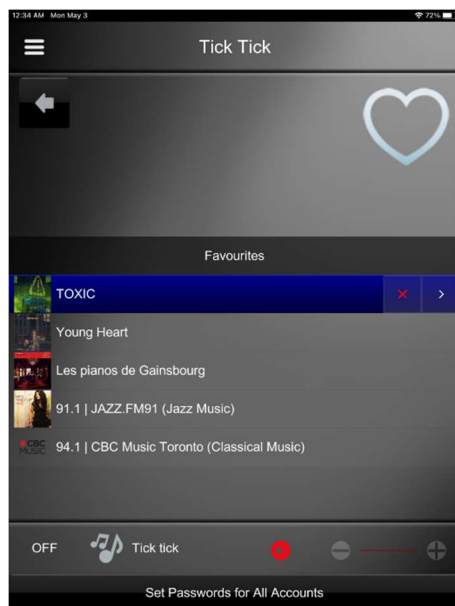
While selecting service album, track, playlist, or station, clicking on the favorite icon (heart icon) will add the item to Favorites and sync to BluOS “My Favorites”.



The added favorite items can be loaded when clicking on “heart icon” on main page.



Clicking on “x” will remove the favorited item (synced to BluOS). Clicking on “>” will play the favorited item.



**NOTE:** Adding / Removing favorite an item in Nice/Elan will also add/remove the item to/from “My Favorites” in BluOS app; but adding / removing favorite an item in BluOS app does not affect Favorites items in Nice/Elan. Favorite items in Nice/Elan are more like a shortcut of playing the items in a fast way.

## 3.8 Media Favorites

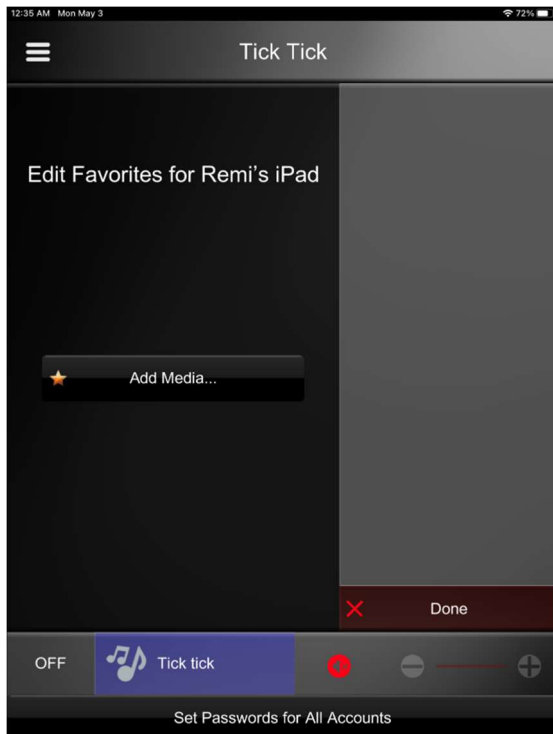
---

Once “Favorites” is available, the favored items can be added to Nice/ELAN Media Favorites.

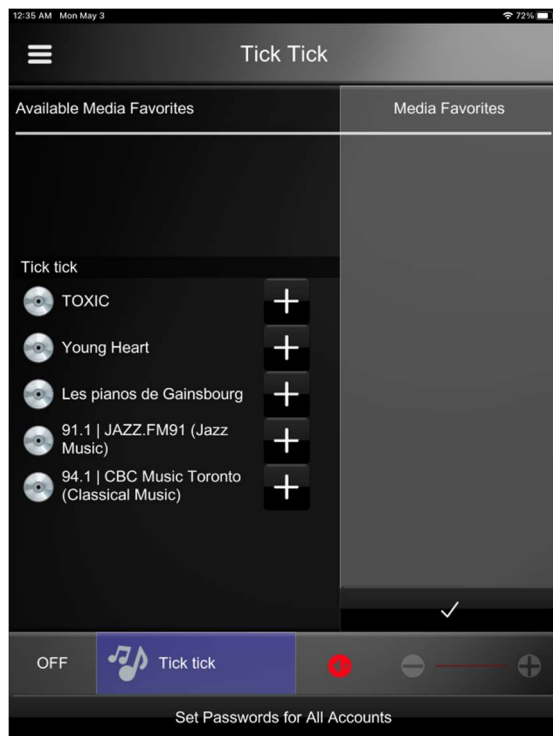
First, click on the heart shape on top right as it shows below.



Then click “Add Media...”



From the listed favorite items, click on “+” sign to add a favorite item to Nice/Elan Media Favorites.

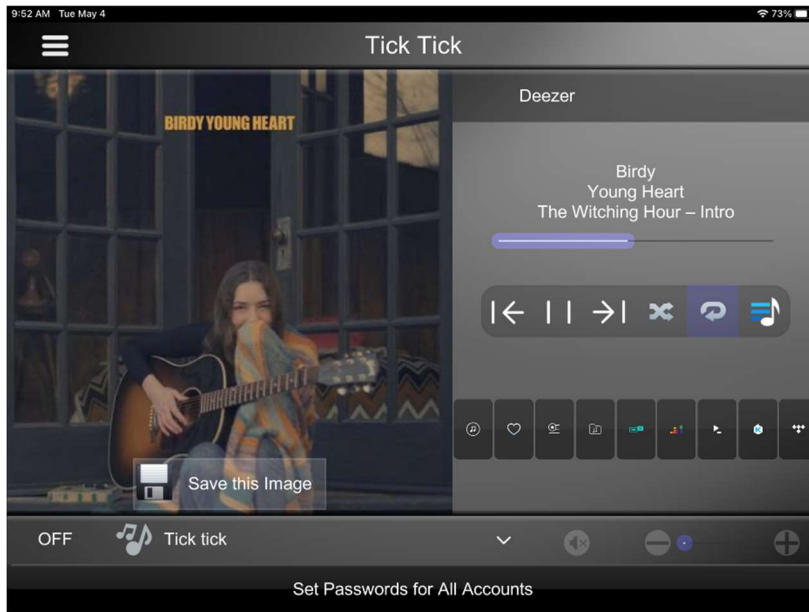


Once a favorite item is added to Media Favorites, it will look like below. Clicking on the item will start to play immediately.



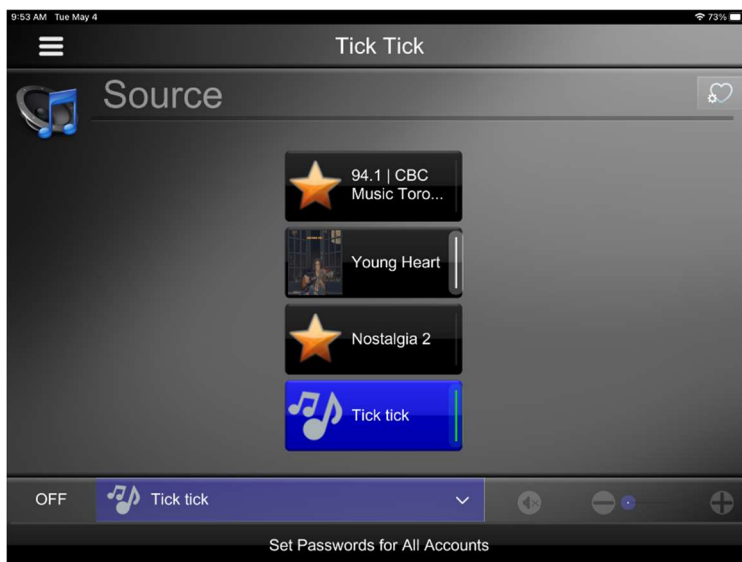


Tap any media favorite item will start to play the item, for example “Young Heart”. Press and Hold the cover art of the item, and tap “Save this Image” to change the cover art of the favorite item.



**Note:** Update the icon of a favorite item only works in horizontal in Viewer.

The icon of the favorite item is changed from “star” to the right cover art.

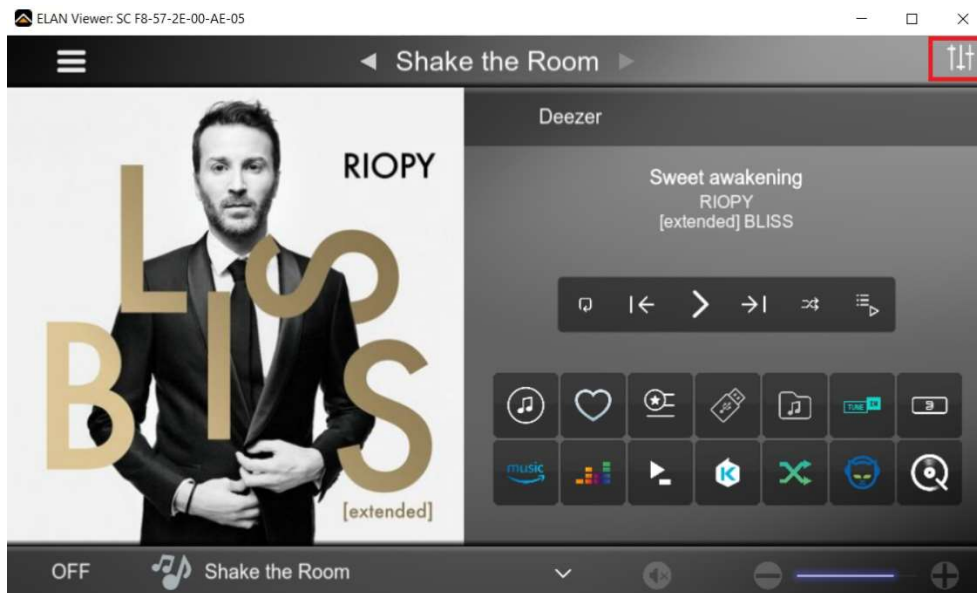


### 3.9 Volume Control

Click on “+”, “-”, and “mute” button at the bottom can control player volume.

## 3.10 Grouping

The driver supports up to 8 groups and 32 players. Click on the settings icon on top right of a zone for grouping UI.



The grouping UI will show as below.



### Notes:

- Does not provide fixed grouping UI but only shows feedbacks of fixed groups.

- Must select a group first before grouping or ungrouping.
- How to group - Select a group and then select a player to be added to the group. The first player added to the group is the master if the player is a fixed group master or not at all grouped.
- *Group All* will group all players to the current zone player if the zone player is not a slave.
- The driver supports up to 8 groups and 32 players but the grouping UI only supports up to 5 groups and 12 players. Users can always add their own UI to have up to 8 groups and 32 players.

## 4.0 Support

---

For technical support issues, contact BluOS technical support at <http://support.bluos.net> or email [support@bluos.net](mailto:support@bluos.net).

## 5.0 Known Issues

---

The following issues are known to exist.

Driver Version	Issue	Workaround
1.4.0	Cover art and album art with "https" url may not display properly	None.
All	Both Repeat and Repeat Once are treated as Repeat.	None. Nice/Elan only supports two states.
All	Deleting multiple tracks from queue may not update the queue properly.	Leave the queue page and return to the queue page again.
1.6.1 1.6.2	Zone Controller driver grouping UI only supports 5 groups and 12 players. Integrators have to create their own UI if more groups / players required for grouping.	None.